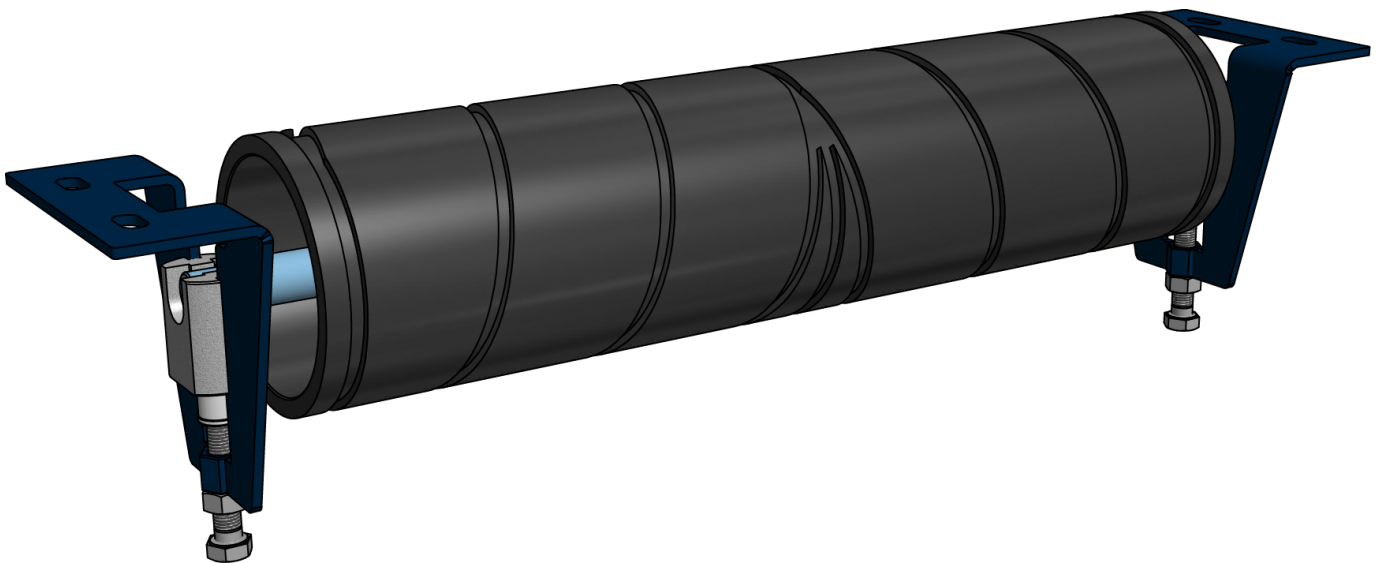




Installation Guide



! IMPORTANT !

BENETECH, INC. HEREBY DISCLAIMS ANY LIABILITY FOR, BUT NOT LIMITED TO:

- IMPROPER INSTALLATION OF EQUIPMENT
- IMPROPER SIZING OF EQUIPMENT
- DAMAGE DUE TO CONTAMINATION OF MATERIAL
- USER'S FAILURE TO INSPECT EQUIPMENT
- USER'S FAILURE TO MAINTAIN EQUIPMENT
- USER'S FAILURE TO TAKE REASONABLE CARE OF THE EQUIPMENT
- INJURIES OR DAMAGE RESULTING FROM USE OR APPLICATION OF THIS PRODUCT CONTRARY TO INSTRUCTIONS AND SPECIFICATIONS CONTAINED HEREIN.

BENETECH, INC.'S LIABILITY SHALL BE LIMITED TO REPAIR OR REPLACEMENT OF EQUIPMENT SHOWN TO BE DEFECTIVE.

! SAFETY !

Review and understand all safety rules given herein along with local and Governmental standards and regulations. Know and understand the American National Standards Institute (ANSI) z244.1-1982 lockout/tagout procedures, the American National Standard for Personnel Protection - Lockout/Tagout of Energy Sources - Minimum Safety Requirements and the Occupational Safety and Health Administration (OSHA) Federal Register, Part IV, 29 CFR Part 1910, Control of Hazardous Energy Source (Lockout/Tagout); Final Rule. Also observe all local and Governmental regulations concerning entry into confined spaces, welding, cutting, grinding, wash-down procedures and all Personal Protective Equipment (PPE) regulations.

The following notations are used throughout in this manual.

! DANGER !

Danger: Denotes immediate hazards that will result in severe personal injury or death.

! WARNING !

Warning: Denotes hazards or unsafe practices that could result in personal injury.

! IMPORTANT !

Important: Denotes instructions that must be followed for proper installation and/or operation of equipment.

NOTE

Note: Denotes general items to assist the reader/ installer/ operator.

Please pay close attention to all of these items and warnings.
They have been included here for your safety and for ease of installation.

Table of Contents

Important Safety Information.....4-5

Pre-Install Safety.....5

Installation Instructions.....6-7

All safety rules defined in this document and all owner/employer as well as State and Federal safety rules must be strictly adhered to when working on/with this, or any, conveyor plow system.



! DANGER !

Do not touch or go near the conveyor belt or conveyor accessories when the belt is running. Your body or clothing can get caught and you can be pulled into the conveyor, resulting in severe injury or death

! DANGER !

Before installing, servicing, or adjusting the plow, turn off AND lock out/tag out all energy sources to the conveyor and conveyor accessories according to ANSI standards. Failure to do so could result in serious injury or death.

! DANGER !

If this equipment is to be installed in an enclosed area, observe all confined space entry regulations and test the atmosphere for gas levels and dust content levels before using a cutting torch, welding equipment or electric hand tools. Using a torch, welding, grinding or drilling in an area with gas or dust may cause an explosion and/or fire resulting in serious injury or death.

! WARNING !

Before using a cutting torch, welders, or grinding equipment, cover the conveyor belt with a fire retardant/resistant cover. Make sure a water source/fire hose is readily available AND OPERATIONAL. Failure to do so can allow the belt to catch fire.

! WARNING !

Conveyor plows are heavy and may require two people to lift. Attempting to lift the plow without assistance could result in injuries or damage to the equipment.

Before Installing the SureGuide Return Roller

1. Inspect ALL shipping containers for damage and correct number of items (skids, pallets, cartons, boxes, etc.) being delivered. Report damage and/or shortages to delivery service immediately and fill out delivery service's claim form. Keep ALL damaged goods for examination. Benetech Inc is NOT responsible for damage occurring during transit.
2. All Benetech Inc. Sure Guides are shipped from our facilities assembled. Care should be taken while disassembling the units to ensure no parts are lost or damaged as the equipment is moved to its desired location. Dispose of shipping containers in an approved manner.
3. If any items are missing, IMMEDIATELY contact BENETECH, INC. or an authorized representative.
4. Gather tools. Minimum tools required for installation are:
 - Tape measure/ String
 - Torch/Hole Saw
 - Level/Straight Edge
 - Welder/Drill
 - Open/Box End Wrenches
 - Socket Set
 - Marker/Soapstone (Welders chalk)
5. If using a cutting torch or welding, test atmosphere for gas level or dust content. Cover conveyor belt with fire retardant cover. Verify locations of fire extinguishers and operational water hoses prior to begin cutting/welding operations.



! WARNING !

Before installing equipment, turn off AND lock out/tag out all energy sources to the conveyor and conveyor accessories according to ANSI standards and local plant regulations. Failure to do so could result in serious injury or death.

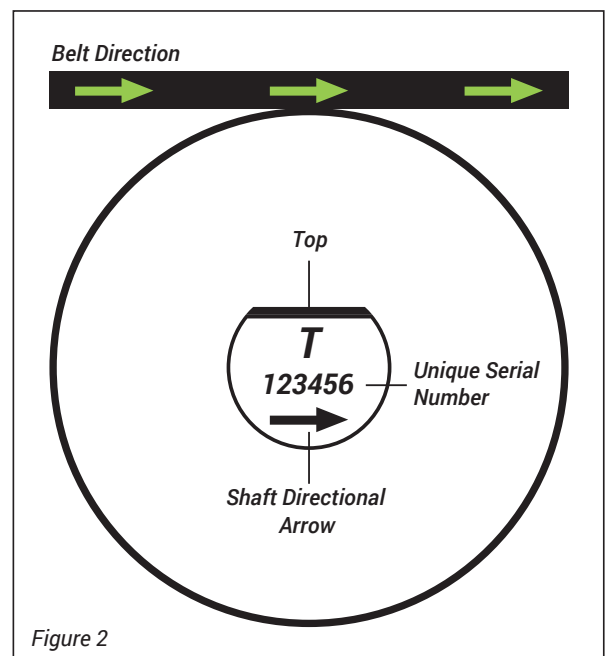
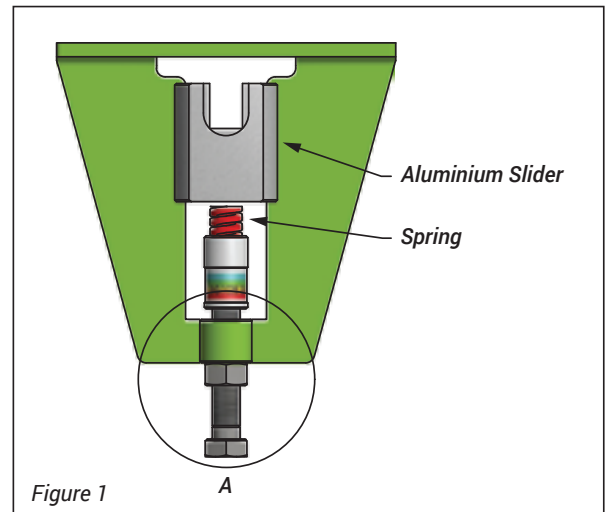
If equipment will be installed in an enclosed area, the atmosphere in the structure/area must be tested for gas levels and dust content levels before using a cutting torch, welding equipment, grinding equipment or electric powered tools. Using a cutting torch, welding, drilling or grinding in an area with gas or dust may cause an explosion.

Installation Instructions

Once a problem area has been identified, it is important to adhere to the safety regulations regarding setup, maintenance and operational repairs.



1. Clear the conveyor belt of material.
2. Ensure all workers have locked themselves from the system.
3. Before installing a SureGuide® Return Roller ensure that the power supply to the conveyor belt has been disconnected.
4. Disengage any take-ups.
5. Raise the conveyor belt off the return idler where you want to install the SureGuide® Return Roller.
6. Remove the idler currently in place.
7. Remove the roller bracket.
8. Install the SureGuide® Pressure Control Bracket.
9. Before inserting the SureGuide® Return Roller and tightening the pressure control bracket, ensure both brackets are correctly aligned and meet operational requirements. Ensure that the Aluminium slider & spring assembly are free to move. See figure 1.
10. Install the SureGuide® Return Roller by confirming the belt direction labels on the roller and match to the direction of the conveyor belt. See figure 2.
11. Take note of the directional arrows punched on the shaft ends of the roller and match to the direction of the conveyor belt.
12. Take note of the word TOP punched into the top of the shaft and match to the direction of the conveyor belt.



13. Check the tilt of the SureGuide in relation to the belt.
14. Adjust the Pressure Control Bracket by screwing the bottom adjusting bolt in or out – so that the Slider Block is in the Green Zone of the pressure indicator.
See figure 3.
15. Lock the adjustment bolt with a lock nut. *See figure 3.*
16. Ensure the edge of the SureGuide® Return Roller does not touch any part of the structure when in full tilt.
17. Ensure there is sufficient traction of the belt on the SureGuide® Return Roller - (Green to Yellow Zone).
18. Prepare to test the conveyor belt.
19. Run the conveyor belt for 15 minutes and test that the SureGuide® Return Roller tracks the belt from both sides.
20. Inspect the pressure indicator again once belt is running at full load capacity and tension. Tension and adjust if necessary, to achieve yellow zone pressure, BUT NOT RED!! **Refer to Pressure Control Indicator on page 3.**
21. Monitor the conveyor belt system for any misalignment and spillage problems.
22. If misalignment and spillage problems still occur, refer back to SureGuide® Troubleshooting Procedures to identify possible causes and solutions.

